

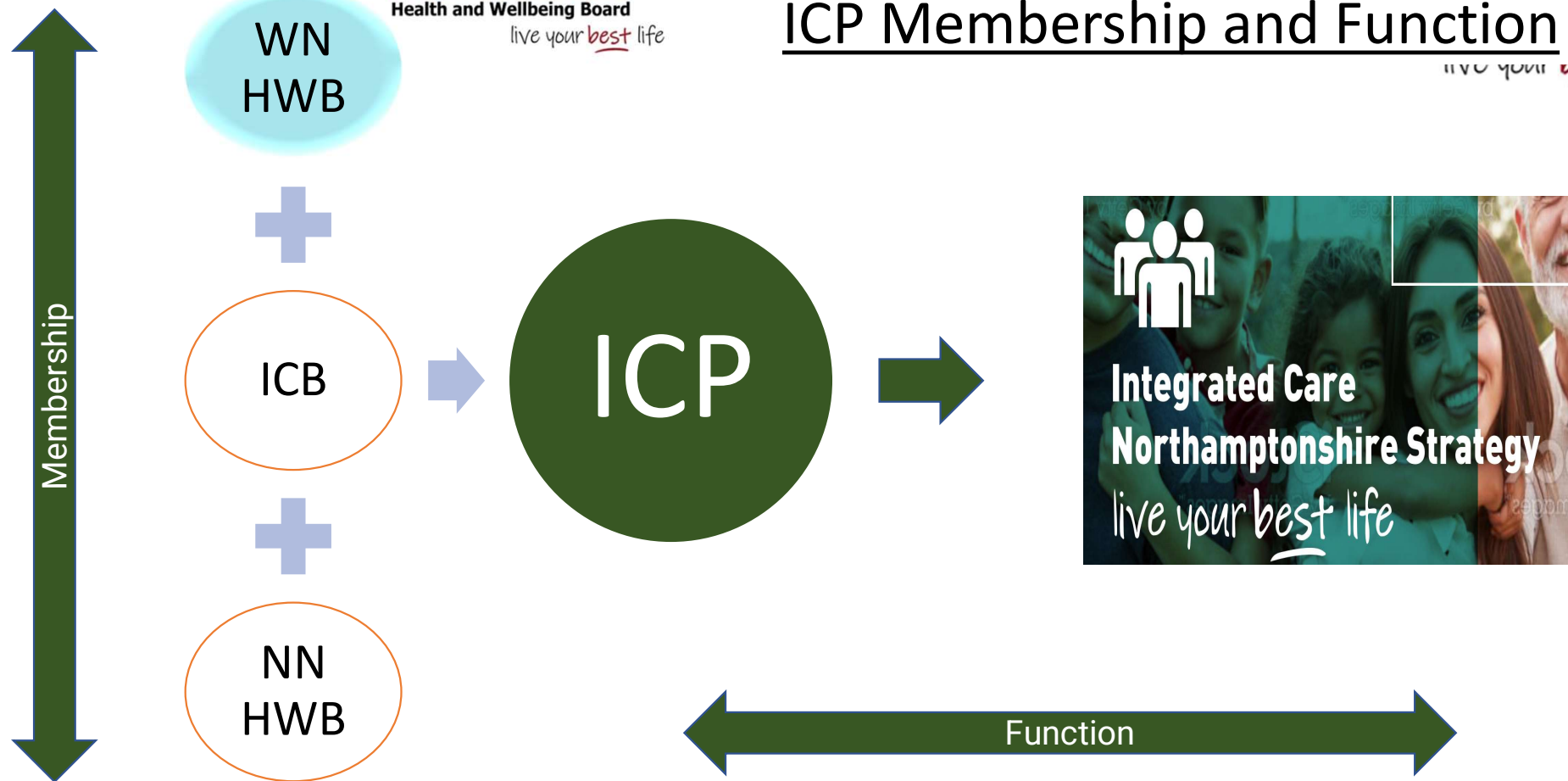
Place Development Town & Parish Council Engagement Event

26th June 2023

Context

- The Health and Care Act 2022 received Royal Assent on 28th April 2022.
- It set out the new legislative framework to facilitate greater collaboration within the NHS and between the NHS, local government and other partners.
- Integrated Care Systems have been introduced across England.
- Under the Act, two bodies have been given statutory status and will collectively make up the ICS or 'system':
 - ICB (Integrated Care Board): responsible for NHS services, funding, commissioning, and workforce planning across the ICS area
 - ICP (Integrated Care Partnership): responsible for **ICS-wide strategy** and broader issues such as public health, social care, and the wider determinants of health

ICP Membership and Function



KEY: WN HWB: West Northants Health & Wellbeing Board, **ICB:** Integrated Care Board, **NN HWB:** North Northants Health & Wellbeing Board, **ICP:** Integrated Care Partnership



Integrated Care Northamptonshire Strategy

live your best life



Shared vision, aims and ambitions

Shared vision

We want to work better together in Northamptonshire to create a place where people and their loved ones are active, confident and take personal responsibility to enjoy good health and wellbeing, reaching out to quality integrated support and services if and when they need help.

Shared aims

- Improve the health and wellbeing of the population
- Reduce inequalities in health and wellbeing outcomes
- Ensure value for money
- Contribute to the economic and social wellbeing of Northamptonshire.

Shared ambitions

We want the people of Northamptonshire to have:

- The best start in life
- Access to the best available education and learning
- Opportunity to be fit, well and independent
- Employment that keeps them and their families out of poverty
- Good housing in places which are clean and green
- Safety in their homes and when out and about
- Feel connected to their families and friends
- The chance for a fresh start when things go wrong
- Access to health and social care when they need it
- To be accepted and valued simply for who they are.



LYBL Ambition

Best Start in Life

Access to the best available education and learning

Opportunity to be fit, well and independent

Employment that keeps them and their families out of poverty

Housing that is affordable, safe and sustainable in places which are clean and green

To feel safe in their homes and when out and about

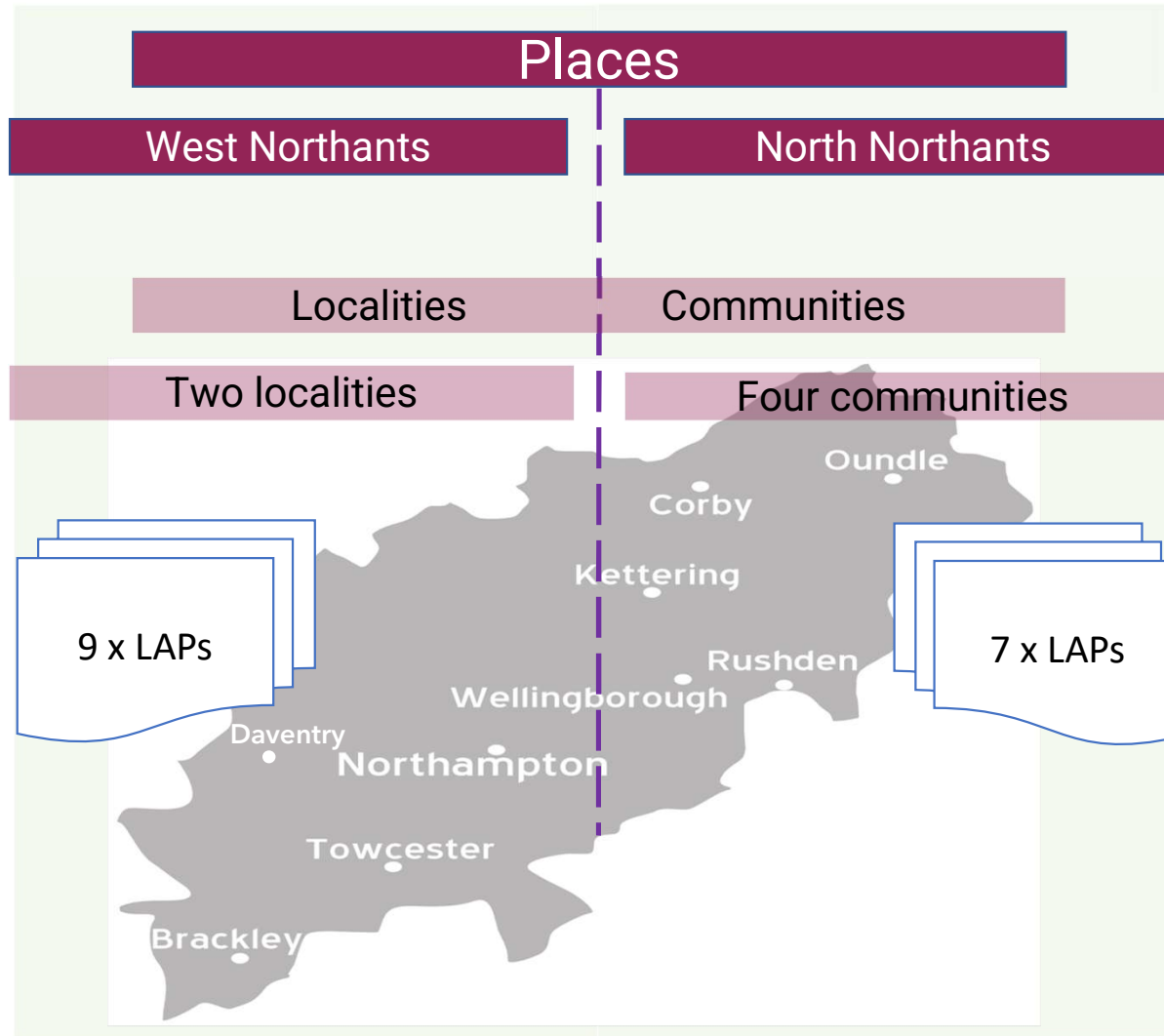
Connected to their families and friends

The chance for a fresh start, when things go wrong

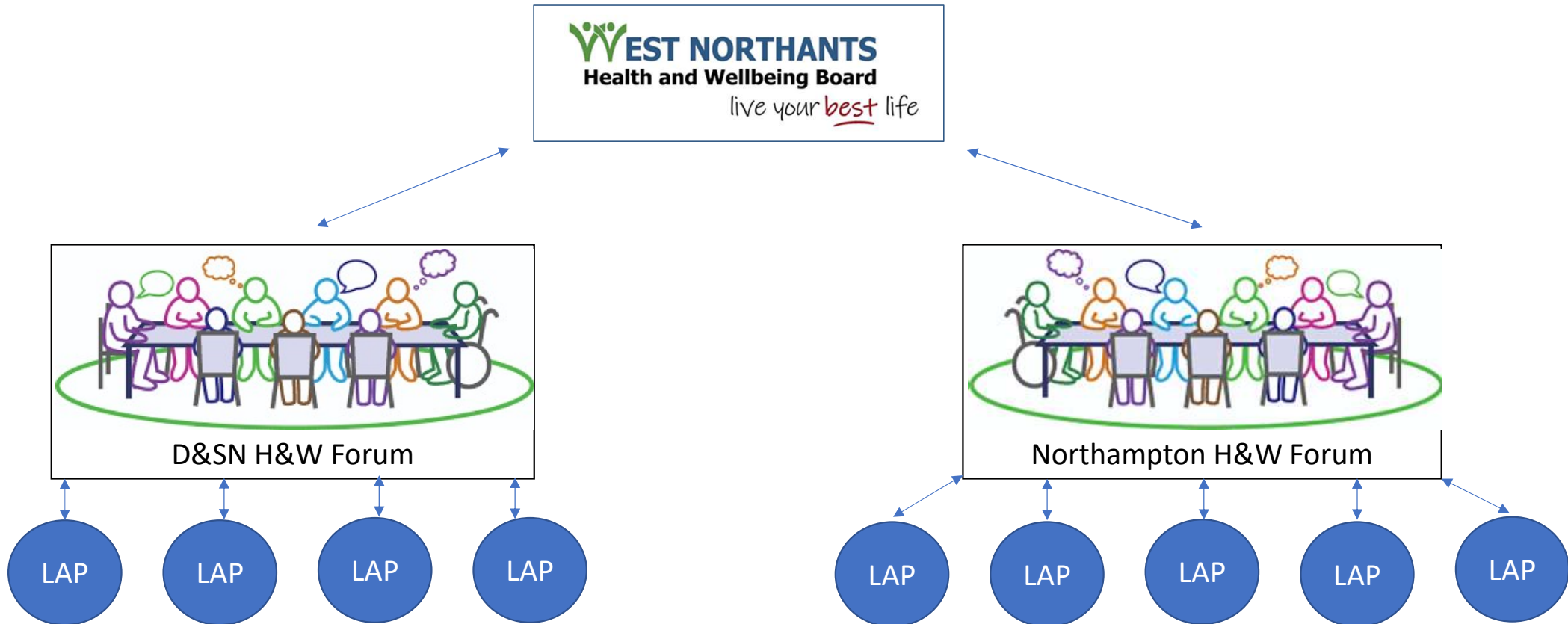
Access to health and social care when they need it

To be accepted and valued simply for who they are

Northamptonshire's Approach to Place Development

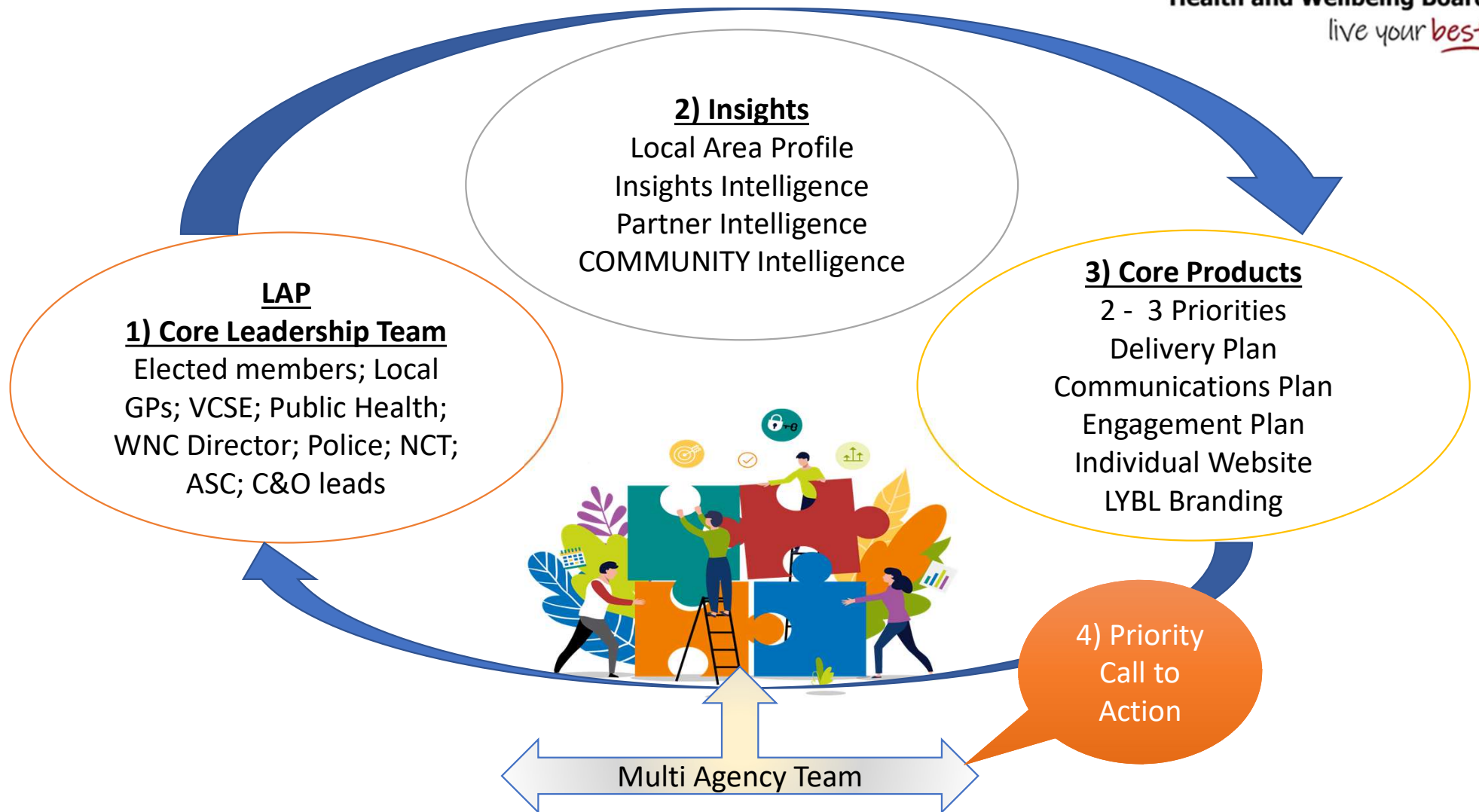


How things link together



Local Area Partnerships

Function of the Local Area Partnerships



LAP Objectives



To promote *partnership* working at a community level to reduce inequalities and improve public health and wellbeing outcomes for local residents.



Health services, care services and wider determinates of health services *integrated* at a local level to reduce duplication and drive efficiencies.

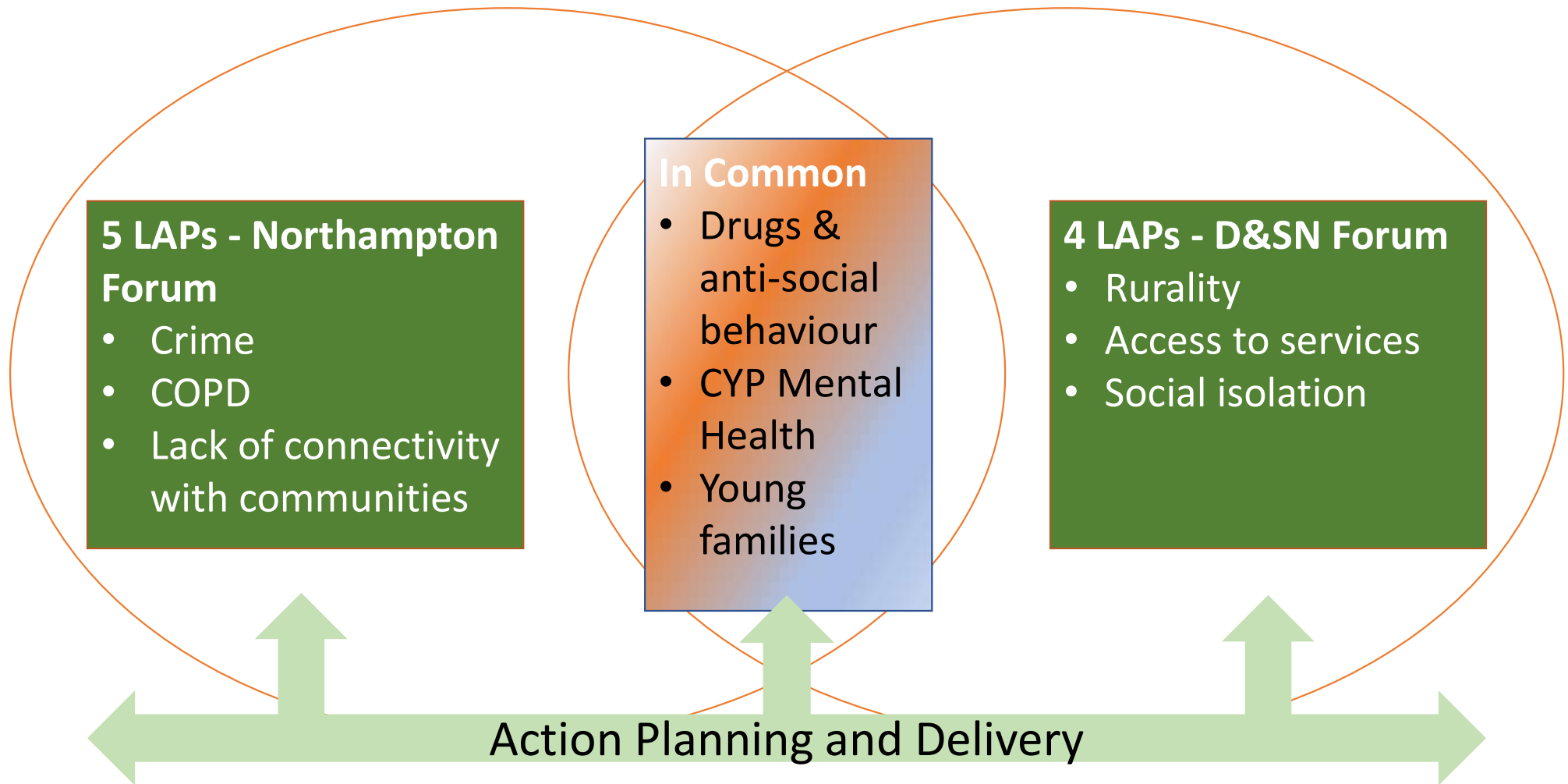


Based on community areas collaborating across organisational barriers to *engage and coproduce* services with local people.



Emerging Outputs from LAP Rollout Discussions

West Northants LAP Priorities



N1

Billing & Rectory Farm,
Riverside Park and Talavera

Evidence

High levels of deprivation
High levels of crime
Poor levels of connection

Priorities

Community Engagement
Support for Operation Revive
in Blackthorn
Youth provision

N2

Delapre & Rushmere, East
Hunsbury, Nene Valley and
Shelfleys

Evidence

Deprivation and affluence
Poor levels of connection
Access to Medical, Dental

Priorities

Young families
CYP Mental Health
Promotion of community
schemes

N3

Duston East, Duston West
& St Crispin and Sixfields

Evidence

Children under 16
Pupil Exclusions & Suspensions
Hotspots High levels of crime
Poor levels of connection

Priorities

Development of Welcome
Pack
One stop shop roadshows
Access to digital training
CYP

N4

Abington & Phippsville, Castle,
Dallington Spencer and St George

Evidence

Highest crime rate; deprived households;
overcrowded households; number of
children living in poverty; Pupil Exclusions &
Suspensions; COPD NELs; HMOs

Priorities

Comprehensive COPD programme
Multi-agency education team
One stop shop pilot in GP Practice
Access to community space for youth
provision

N5

Boothville & Parklands, Headlands,
Kingsthorpe North and Kingsthorpe
South

Evidence

Largest over 65 years old
High levels of crime and ASB
Poor levels of connection
Life expectancy is lower than national
average for both males and females

Priorities

Data collection for life expectancy
Police after-school activities to reduce ASB
Asset mapping for warm welcoming spaces
and food banks

DSN1

Braunston & Crick, Brixworth,
Long Buckby and Moulton

Evidence

Highest level of rurality of all LAPs
Large villages and very rural areas
Older population
Poor connection with communities
Population growth

Priorities

Frailty
Isolation / Chatty Cafes
Transport
Good Neighbour Scheme

DSN2

Daventry West, Daventry East and
Woodford & Weedon

Evidence

Rurality
High universal claims for housing benefit
and child entitlement
High levels of violent crime and ASB

Priorities

Teen Clinic pilot
School Ambassadors and Youth Forum
Mental Health services in schools
Family Hub Abbey Centre

DSN3

Brackley, Middle Cheney and
Silverstone

Evidence

Highest aged 75 and over

ASB

Cross border issues (crime and health)

Access and transport

Priorities

Brackley level of drugs

CYP Mental Health

Brackley Youth Club

Social Isolation

DSN4

Bugbrooke, Deanshanger, Hackleton
& Grange Park and Towcester &
Roade

Evidence

CYP

Youth provision

Cross border issues (crime and health)

Access and transport

Priorities

Older men and social isolation

Piloting Rural Health Toolkit

Family Hub Towcester

Warm Welcoming Spaces

Young families

Contribution to the 10
Live your best life
Ambitions

Emerging priority discussion areas	DSN1	DSN2	DSN3	DSN4	N1	N2	N3	N4	N5	LYBL Ambition
Rurality	√		√	√						Connected to their families and friends
Older Population	√			√					√	Connected to their families and friends
										Opportunity to be fit, well and independent
CYP Mental Health		√	√		√	√	√	√	√	Best Start in Life
										Access to health and social care when they need it
Young Families		√		√	√	√	√	√		Best Start in Life
Crime		√			√	√	√	√	√	To feel safe in their homes and when out and about
Misuse of social media			√							Best Start in Life
										To feel safe in their homes and when out and about
Drugs & anti-social behaviour		√	√	√	√	√		√	√	To feel safe in their homes and when out and about
										Opportunity to be fit, well and independent
Cross border issues (crime & health)			√	√						To feel safe in their homes and when out and about
										Access to health and social care when they need it
Lack of connectivity with communities	√				√	√	√	√	√	Connected to their families and friends
Transport (access)	√	√		√						Connected to their families and friends
										Access to health and social care when they need it

Thank you and any questions